

HYDRAULIC SCISSOR LIFT

UNI LIFT 6500 & 8000

HYDRAULIC FLEXIBILITY



THE BEST HYDRAULIC SCISSOR LIFT FOR CARS, SUVS AND VANS

- ✓ Long runways up to 6000 mm
- ✓ Hydraulic synchronization system and mechanical locks
- ✓ High performance oil-submerged motor

6500 KG | 8000 KG

HYDRAULIC SCISSOR LIFT

UNI LIFT 6500 & 8000

The highest safety for cars, SUVs and vans

Long-lasting and safe, the UNI LIFT 6500 and 8000 feature a hydraulic synchronization system combined with a mechanical lock. Practical and space saving, with numerous options: the UNI LIFT is your best investment for heavy vehicles repairs, wheel alignment (UNI LIFT 6500 only) and more.

Wide range of vehicles

- ✓ Passenger cars
- ✓ Commercial vans / transporters
- ✓ Light trucks

Safety

- ✓ Hydraulic synchronization system guarantees synchronization of scissor units, mechanical locks serve as an additional security device
- ✓ High performance oil-submerged power unit ensures a quiet operation and short lifting and lowering times



Versions

- Above ground or in-ground installation
- Wheel alignment version (UNI LIFT 6500)

Numerous options and accessories

- Joint play detector
- Lighting integrated in the runways
- Hydraulic axle jack in different weight classes

UNI LIFT 6500 AND 8000 TAKES CARE OF YOUR CARS, TRANSPORTERS AND LIGHT TRUCKS



Mechanical locks

No fixed connection between the scissors

Optional integrated lighting (non-contractual photo)

YOUR UNIQUE ADVANTAGES

- Always precise
- Runway can be equipped with recesses for turntables and sliding plates for wheel alignment (UNI LIFT 6500)
- Low construction height and short drive-on ramps
- Long and wide runways for easy and safe access



THE UNI LIFT ADAPTS TO YOUR NEEDS

UNI LIFT	6500	8000
Lifting capacity (kg)	6500	8000
Lifting/lowering time approx. (sec)	40/40	40/40
Lifting height (mm)	1877/1927*	1877
Drive-on high platform (mm)	240	240
Runway width (mm)	788	788
Runway length (mm)	5500	6000
Total width (mm)	2526	2526
Total length over floor (mm)	6780	7270
Power supply (V/Hz)	400/50	400/50
Motor (kW)	3	3

* UNI LIFT 6500 AMS: 1927 mm

OPTIONS & ACCESSORIES

JAX	2000	2600	4000
Lifting capacity (kg)	2000	2600	4000
Stroke (mm)	250	250	250
Telescopic arms (mm)	780-1610	780-1610	780-1500
Width (+ support arms) (mm)	780-1180	780-1180	780-1220
Air supply (bar)	8,5-12	8,5-12	8,5-12

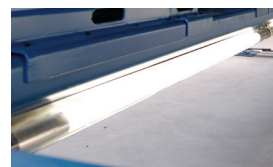
ACCESSORIES



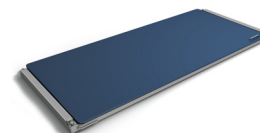
Jax 2000/2600



Jax 4000



Lighting tubes LED



Sliding plate for alignment



Play detector with remote control

**More accessories
available**