

## INGROUND 2-PISTON LIFT

# TOP LIFT 2.35 TLAD

## FLUSH MOUNTED



Wheel free system flush with platform

Turn table (optional accessory)

Sliding plate Precision 1200 mm 0016898 (optional accessory)

Installation frame

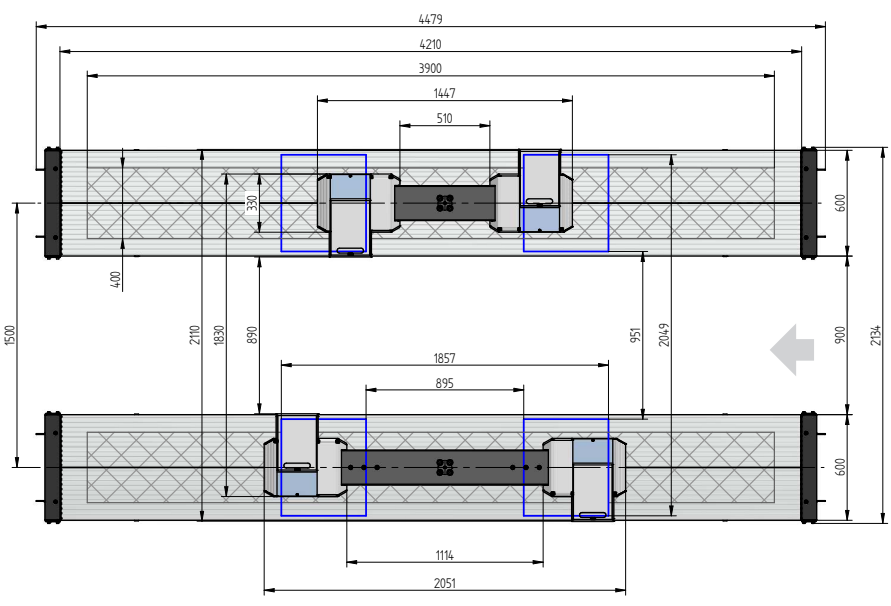
Drive on ramp 0016766 (optional accessory)

Length and crosswise adjustable aluminum slider plates

### TECHNICAL DATA

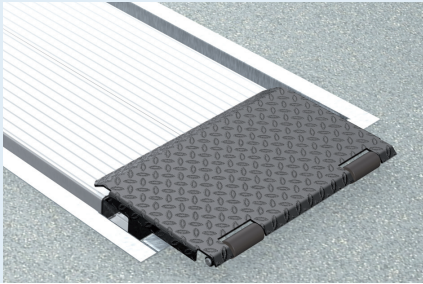
capacity	3500 kg
wheel free lift	3500 kg
effect. raise height platform	2008 mm
effect. raise height wheel free unit	1982 mm
platform length	4400 mm
platform height	180 mm
drive over height wheel free unit	60 mm
piston diameter	123 mm
piston distance	1500 mm
installation depth	2443 mm
motor output	3,0 kW
power connector	400 V/16 A
cable length to control	11 m
lifting time	≈ 35 sec.
lowering time	≈ 35 sec.

Platform 2.35 TLAD with platform notches for wheel free system flush with platform, turn tables and sliding plates	0016910
Platform 2.35 TLAD with platform notches for wheel free system flush with platform	0016909
Platform 2.35 TLAD	0017053
Platform wheelfree 2.35 TLAD	0016907
Installation cassette 1500 mm TLAD	0016905
Lifting unit 3,5 t TLAD 1500 mm - K pre-assembled in installation cassette	0017054
Lifting unit 3,5 t TLAD 1500 mm - K for wheel free system, pre-assembled in installation cassette	0016908
Installation frame H 2-Stempel 4400 mm	0016894



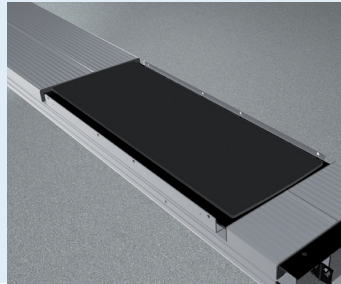


## ACCESSORIES



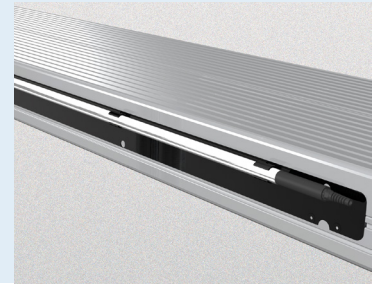
**Drive on ramp**

0016766



**Sliding plate**

Precision 1200 mm  
 0016898



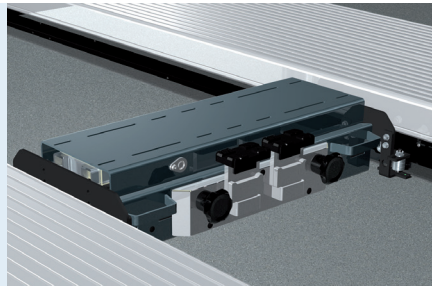
**Lighting**

LED  
 0016903



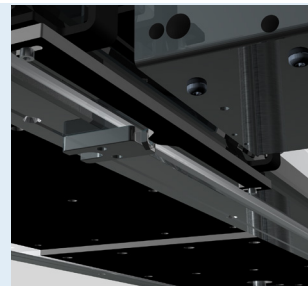
**Slide rail**

4400 mm  
 0016899



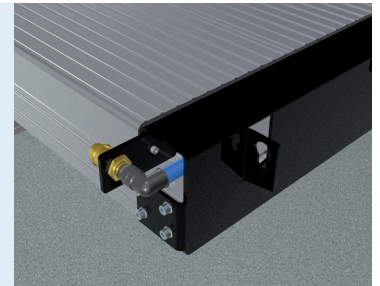
**Axle Jack 2600 kg**

pneumatic, without slide rails  
 0016767



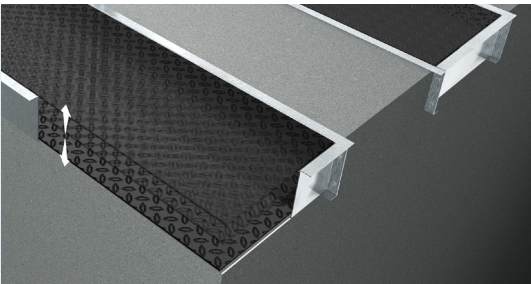
**Park position**

for Axle Jack  
 0016768



**Compressed air supply**

0016770



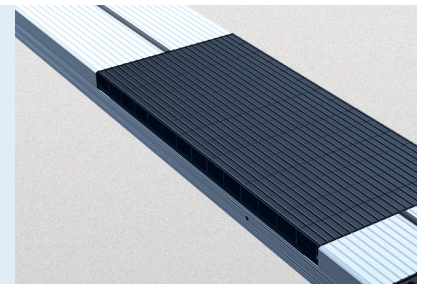
**Autom. floor levelling system**

2-piston TLAD 4400 mm  
 0016902



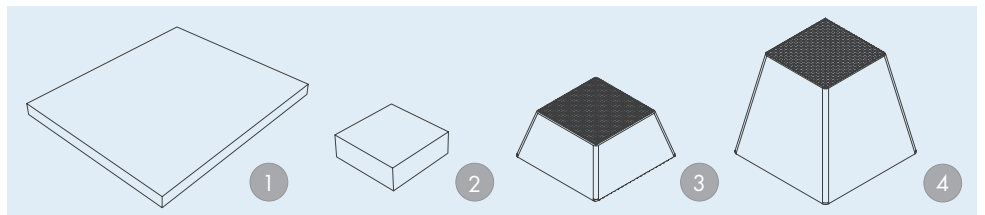
**Wheel alignment supports**

telescopic  
 0016771



**Rubber elements**

50 mm 100 mm 200 mm  
 0017298 0017299 0017300



**Rubber pads**

1 | 290 x 335 x 20 mm 2 | 120 x 120 x 40 mm  
 0016740 0016739

**Rubber pads Pyramid**

3 | 70 mm 4 | 140 mm  
 0015742 0016738

Techn. changes and errors excepted.  
 Valid from 01 2022 ©  
 Nussbaum Custom Lifts GmbH | Hertzstr.6  
 77694 Kehl | Germany  
 Tel.: +49 (0) 7853 899 - 0 | Fax: +49 (0) 7853 8787  
 info@nussbaum-group.de | nussbaumlifts.com