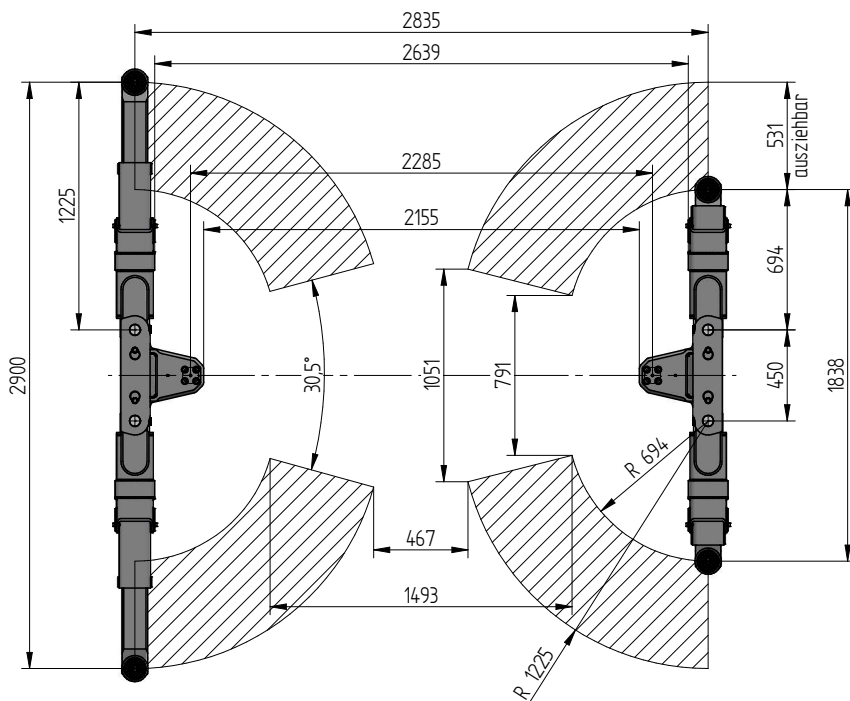


INGROUND 2-PISTON LIFT

TOP LIFT 2.35 TLK

FLUSH MOUNTED



TECHNICAL DATA

Capacity	3500 kg
Effective raise height	2048 mm
Move in height	90 mm
Piston diameter	123 mm
Piston distance	2285 mm
Installation depth	2408 mm
Motor output	3,0 kW
Power connector	400 V/16 A
Cable length to control	11 m
Lifting time	≈ 35 sec.
Lowering time	≈ 35 sec.

Arms 2.35 TLK 0015743

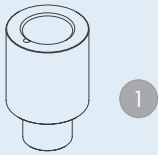
Installation cassette 2285 mm 0016795

Lifting unit 3,5 t 2285 mm - K
pre-assembled in installation cassette 0016793

Surround frame 2.35 TLK 2285 0016796

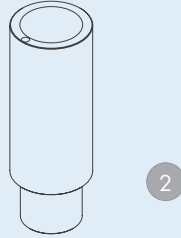


ACCESSORIES



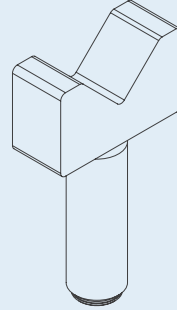
1

1 | Stacking adapter
extension
89 mm
d 50 x 89 mm
0016747 (1Set / 4 Pieces)



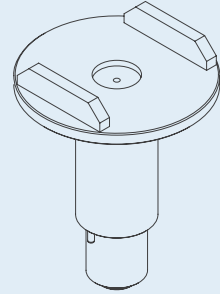
2

2 | Stacking adapter
extension
127 mm
d 50 x 127 mm
0016746 (1Set / 4 Pieces)



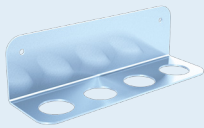
3

3 | Stacking adapter
V-shape
d 50 / 87 - 130 mm
0016748 (1Set / 4
Pieces)

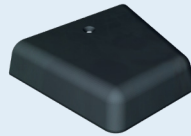


4

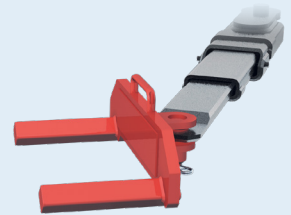
4 | Stacking adapter
U-form
d 50
0016749
(1Set / 4 Pieces)



Bracket for stacking-
adapter extension
0016751



Rim protector
0015746 (1Set / 2 Pieces)



Wheel fork adapter
2.35 TLK
0016752 (1Set / 4 Pieces)