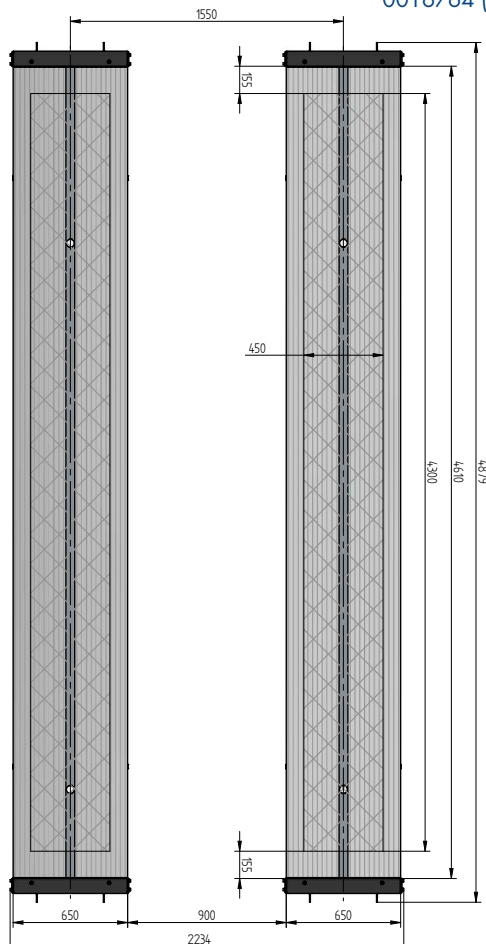
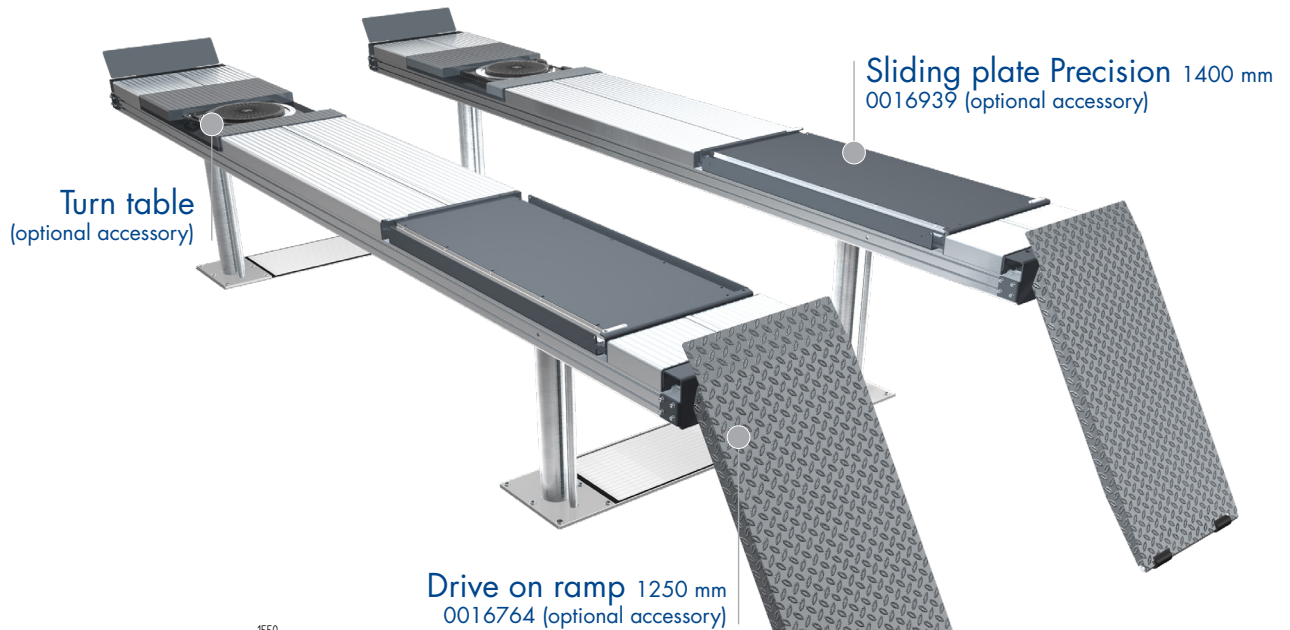


INGROUND 4-PISTON LIFT

TOP LIFT 4.40 TLA

SURFACE MOUNTED



TECHNICAL DATA

capacity	4000 kg
effect. raise height	2008 mm
platform length	4800 mm
platform height	180 mm
piston diameter	123 mm
piston distance	1550 mm
installation depth	2443 mm
motor output	3,0 kW
power connector	400 V/16 A
cable length to control	11 m
lifting time	≈ 35 sec.
lowering time	≈ 35 sec.

Platform 4.40 TLA with platform notches for turn tables and sliding plates 0016935

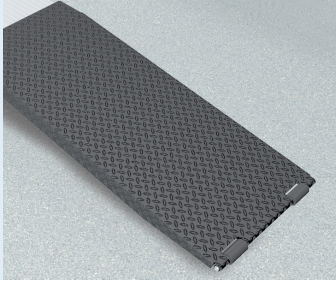
Platform 4.40 TLA 0016933

Installation cassettes 1550 mm 0016928

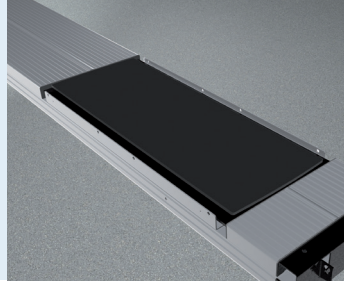
Lifting unit 4,0 t 1550 mm - K pre-assembled in installation cassette 0016931



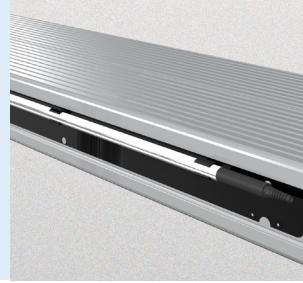
ACCESSORIES



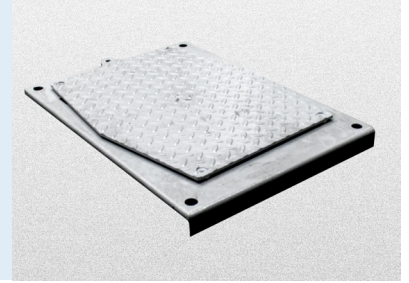
Drive on ramp
1250 mm
0016764



Sliding plate
precision 1400 mm
0016939



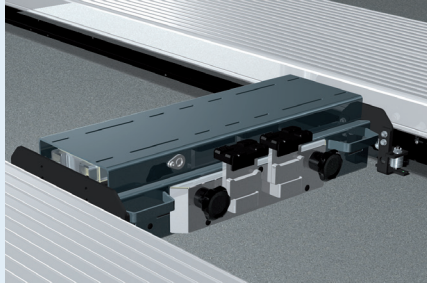
Lighting
LED
0016903



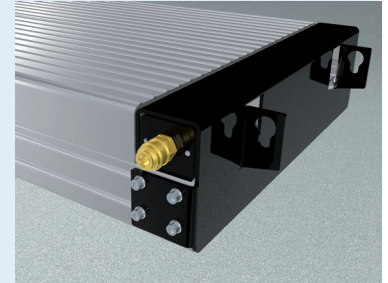
Play detector



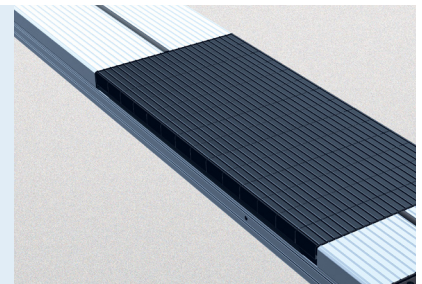
Slide rail
4800 mm
0016911



Axle Jack 2600 kg
pneumatic, without running rail
0016767



Compressed air supply
0016769



Rubber elements
50 mm 100 mm 200 mm
0017301 0017302 0017303